

West Quarter corner Section 14, Township 12 North, Range 70 West

CERTIFIED LAND CORNER RECORDATION

DESCRIPTION OF CORNER EVIDENCE FOUND, AND ORIGINAL RECORD (If known)

The original corner was a granite stone 26" x 16" x 10" set in a mound of rock, with 1/4 marker on the West side. Old North - South fence line has angle point where old fence line to the East intersects

DESCRIPTION OF MONUMENT AND ACCESSORIES ESTABLISHED TO PERPETUATE THE ORIGINAL LOCATION OF THIS CORNER:

Set a 5/8 inch copper rod with 1 1/2 inch copper cap stamped with P.E. & L.S. 692 at intersection fence

From the corner to ties:

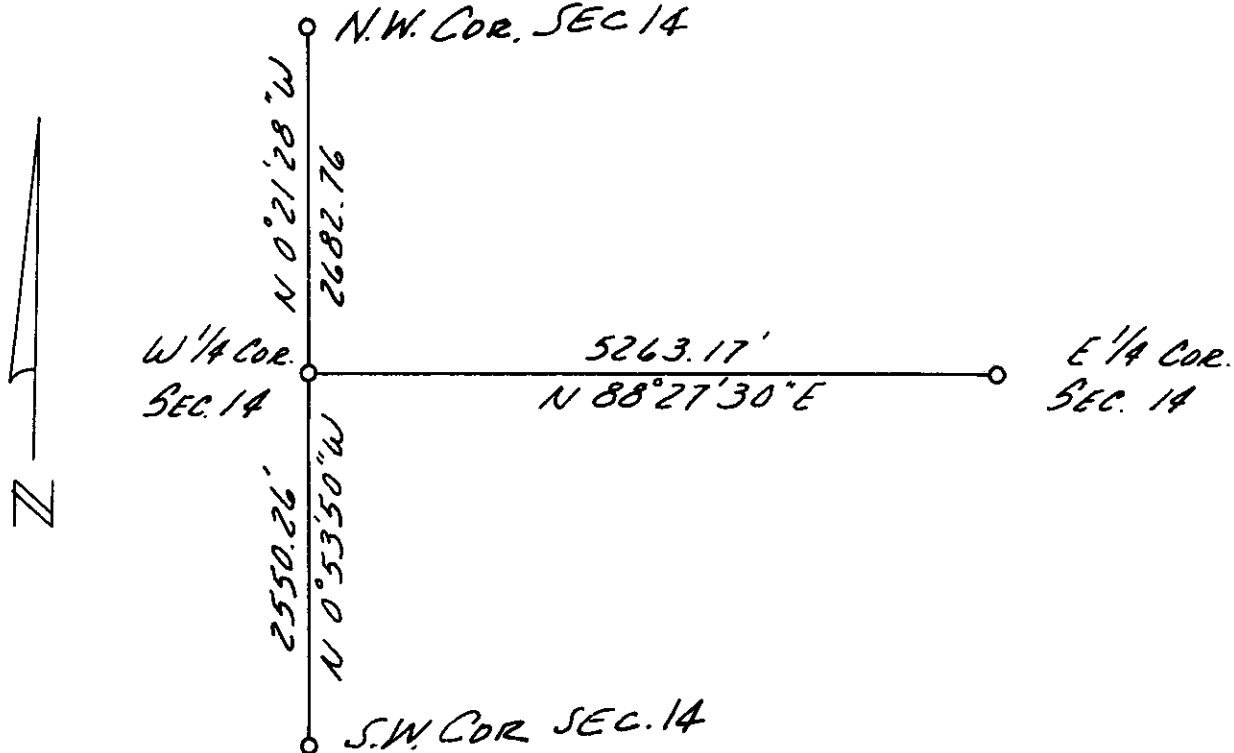
Northeast 49.50' to nail and flagging in 8" tree

East Southeast 15.50' to nail and flagging in 10" tree

West Southwest 25.00 feet to nail and flagging in 18" tree

SKETCH, WITH COURSE AND DISTANCE TO ADJACENT CORNER IF DETERMINED IN THIS SURVEY.

(May Sketch or Paste Reproduction on Reverse Side.)



I, Neil M. Kruback certify that I have carefully performed or reviewed the work done on the diagrammed corner as reported on this recordation form and approve the same.

Neil M. Kruback
Signature of Surveyor

692
Registration No.

STATE OF WYOMING,
Office of Clerk, and Recorder,
County of Taramie

This "corner record" was filed for record on the 16 day of December, 1973, was noted on the cross-index plat and is assigned page No. _____, in book No. _____.

John B. Huismann
County Official

Cross Index No. <u>L-17</u>	T. <u>12 N</u>	R. <u>70W 6thP</u>	Mer.
_____	T. _____	R. _____	Mer.
_____	T. _____	R. _____	Mer.
_____	T. _____	R. _____	Mer.
_____	T. _____	R. _____	Mer.
_____	T. _____	R. _____	Mer.
_____	T. _____	R. _____	Mer.

Photographed ✓
 Indexed SP
 Posted ✓
 Assessor ✓

The state of Wyoming }
 County of Laramie } SS
 This instrument was filed for record
 at _____ o'clock 4 M. on the
18 day of December
1973 and duly recorded in
 Book _____ on page _____

 Deputy Clerk & Ex-Officio Register of Deeds
 Deputy